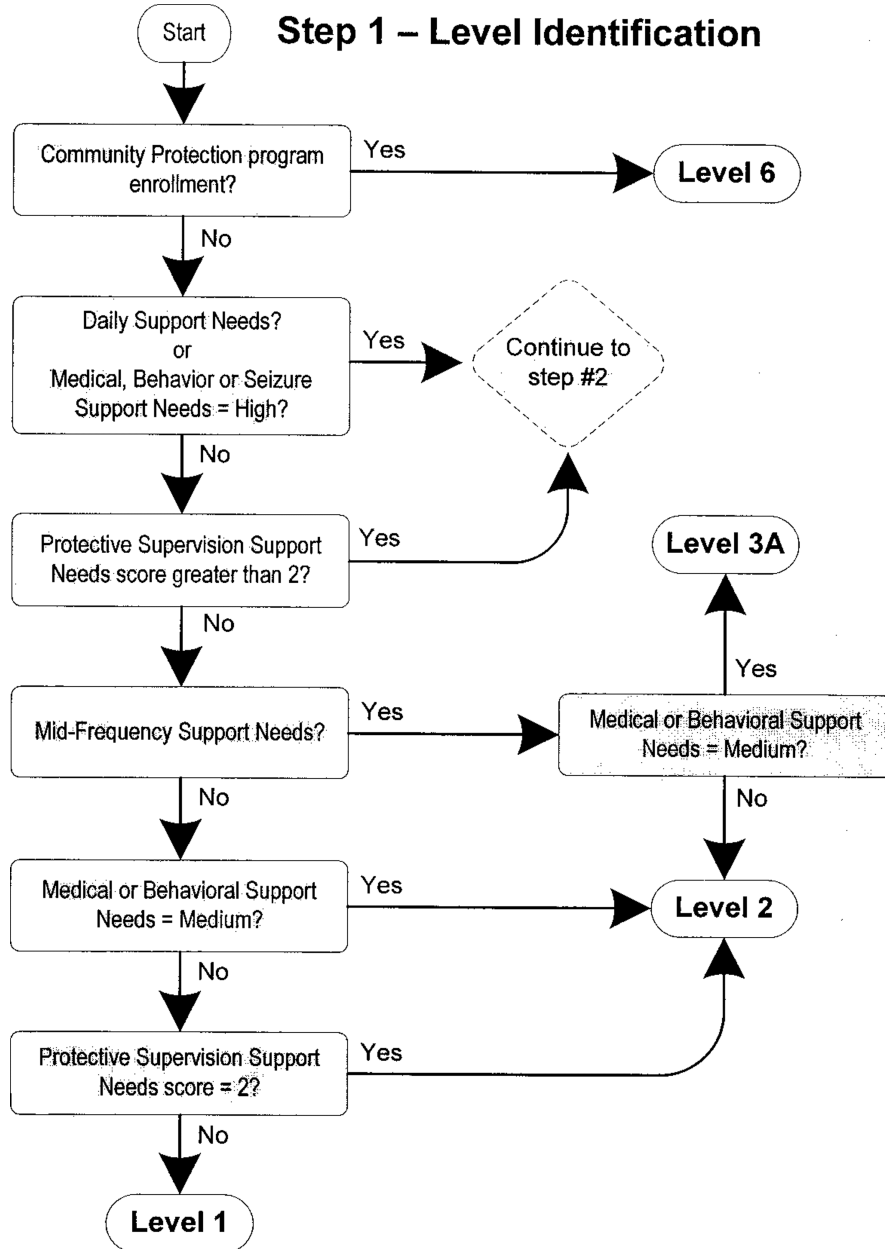


WAC 388-828-9700 How does the residential algorithm use your assessed support needs scores to determine your residential service level of support? (1) The residential algorithm uses your assessed support needs scores (as defined in WAC 388-828-9550 through 388-828-9690) to answer questions in a decision tree.

(2) The decision tree path determines your residential service level of support (WAC 388-828-9540).

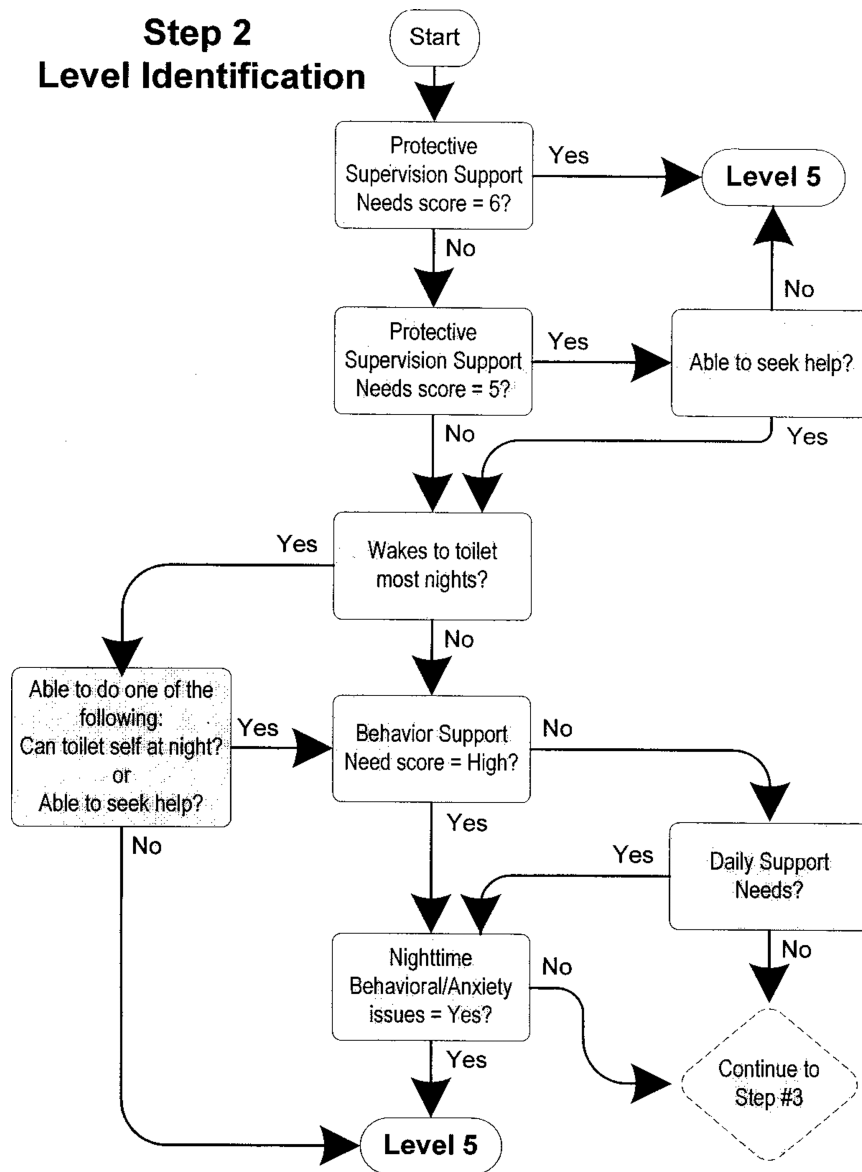
(3) The decision tree is separated into the following three steps:

(a) Step 1 determines whether your residential support needs scores meet the criteria for less than daily support or the criteria for community protection.



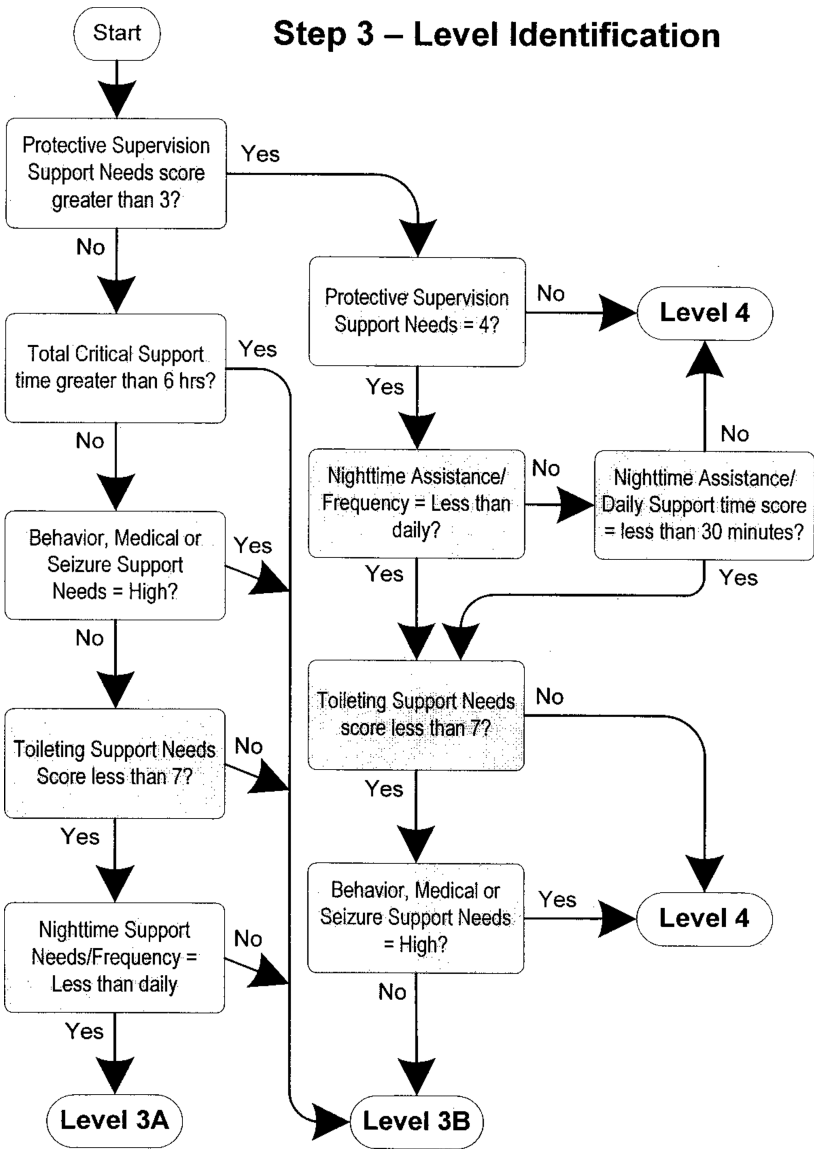
(b) Step 2 determines whether your residential support needs scores meet the criteria for continuous day and night support.

**Step 2
Level Identification**



(c) Step 3 determines whether your residential support needs scores meet the criteria for intermittent support.

Step 3 – Level Identification



[Statutory Authority: RCW 71A.12.030 and Title 71A RCW. WSR 09-06-047, § 388-828-9700, filed 2/25/09, effective 3/28/09. WSR 08-15-091, re-recorded as § 388-828-9700, filed 7/17/08, effective 7/17/08; WSR 08-12-037, § 388-828-10380, filed 5/30/08, effective 7/1/08.]