

WAC 296-843-100 Scope. This chapter applies if you have any of the following:

(1) Employees working in operations involving hazardous waste at a treatment, storage, and disposal (TSD) facility required to have a permit or interim status AND regulated by any of the following:

(a) 40 C.F.R. Parts 264 and 265 under the Resource Conservation and Recovery Act of 1976 (RCRA), 42 U.S.C. 6901 et seq.;

(b) Agencies implementing RCRA through agreements with the United States Environmental Protection Agency (U.S.E.P.A.);

(c) Chapter 173-303 WAC, Dangerous waste regulations; or

(2) Employees conducting initial investigations of government-identified sites before determining whether hazardous substances are present; or

(3) Corrective actions, involving clean-up operations, at sites covered by the Resource Conservation and Recovery Act of 1976 (RCRA) as amended (42 U.S.C. 6901 et seq.) or chapter 70.105 RCW, Hazardous waste management; or

(4) Employees performing clean-up operations at an uncontrolled hazardous waste site. Sites include, but are not limited to:

(a) The Environmental Protection Agency's (EPA) National Priority Site List (NPL); see <http://www.epa.gov/superfund/sites/npl/wa.htm>;

(b) Sites recommended for inclusion on the EPA NPL;

(c) State priority site lists, for example those listed under chapter 173-340 WAC, Model Toxics Control Act (MTCA); see <http://www.ecy.wa.gov/programs/tcp/cscs/CSCSpaage.HTM>;

(d) Unlisted sites recognized by a federal, state or local government as an uncontrolled hazardous waste site. Examples of such sites include:

(i) Sites that do not meet clean-up goals established by the MTCA and that pose a threat or potential threat to human health or the environment;

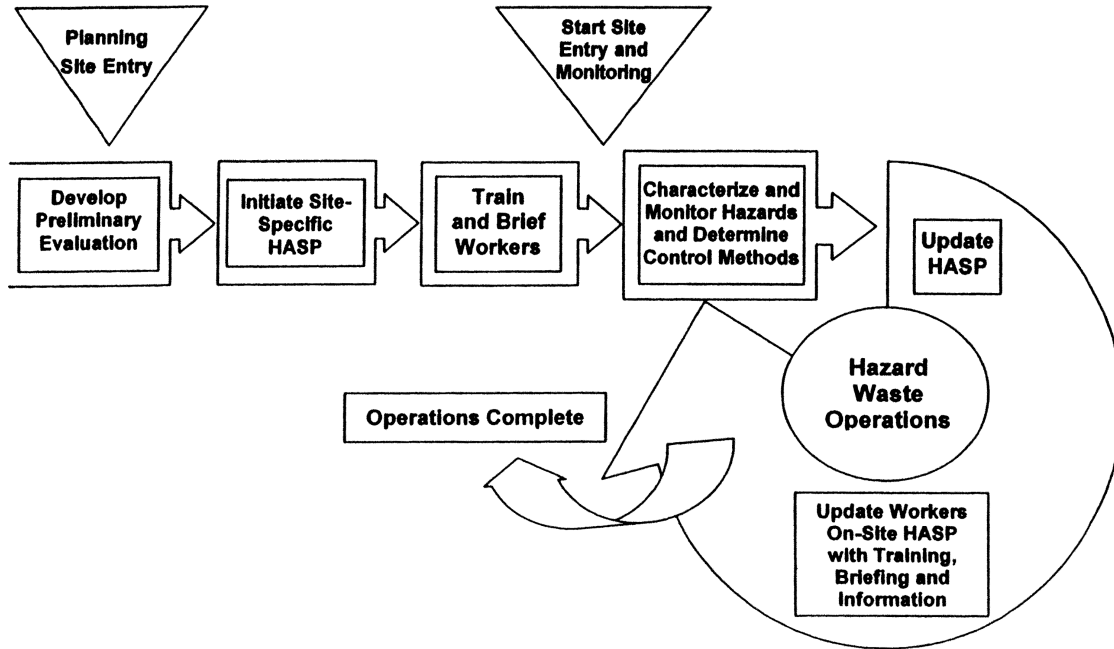
(ii) Clandestine drug lab sites designated for cleanup;

(e) Postemergency response cleanup at the site of a hazardous substance release regulated by chapter 296-824 WAC, Emergency response.

IMPORTANT:

This chapter applies to hazardous waste sites until cleanup at the site is determined to be complete by the governing regulatory agency.

Site Evaluation Health & Safety Plan (HASP) Development Cycle



IMPORTANT: This diagram is to illustrate the general flow of the site. Please see the body of the regulation for details.

Illustration 1

Other rules that may apply to hazardous waste operations:

You will find safety and health requirements (for example, personal protective equipment) are addressed in other rules and also in this chapter. If you find a conflict in requirements, you need to meet the more protective requirement. Contact your local L&I office if you need assistance in making this determination.

Examples of other rules that may apply:

1. Chapter 296-800 WAC, Safety and health core rules:
 - a. WAC 296-800-140 Accident prevention program;
 - b. WAC 296-800-210 Lighting;
 - c. WAC 296-800-230 Drinking water, bathrooms, washing facilities and waste disposal.
2. Chapter 296-24 WAC, Safety standards for general safety.
3. Chapter 296-833 WAC, Temporary housing for workers.
4. Chapter 296-62 WAC, General occupational health.
5. Chapter 296-155 WAC, Safety standards for construction work.
6. Chapter 296-824 WAC, Emergency response.
7. Chapter 296-841 WAC, Respiratory hazards.
8. Chapter 296-842 WAC, Respirators.

[Statutory Authority: RCW 49.17.010, 49.17.040, 49.17.050, and 49.17.060. WSR 18-22-116, § 296-843-100, filed 11/6/18, effective

12/7/18; WSR 04-02-053, § 296-843-100, filed 1/5/04, effective
5/1/04.]